

SKINNY GUY  
CAMPERS

# ARMOR

PROUDLY DESIGNED AND MADE IN THE USA



## Chassis and Running Gear

- Norco mainframe, stamped, heavy gauge steel and powder-coated
- ARK fold-away tongue jack with dual swivel caster wheel
- BAL 5200 lbs. independent suspension and high clearance design with electric brakes
- Dual front & rear, heavy duty extendable BAL stabilizing jacks with foot pads
- Oversized All-Terrain radial tires with aluminum wheels
- Rear-mounted HD high-clearance, full-size spare tire carrier
- Front chassis mounted storage (for generator, propane, or gear)
- 2 inch trailer hitch ball receiver with Lock 'n Roll full articulating hitch prep

## Culinary

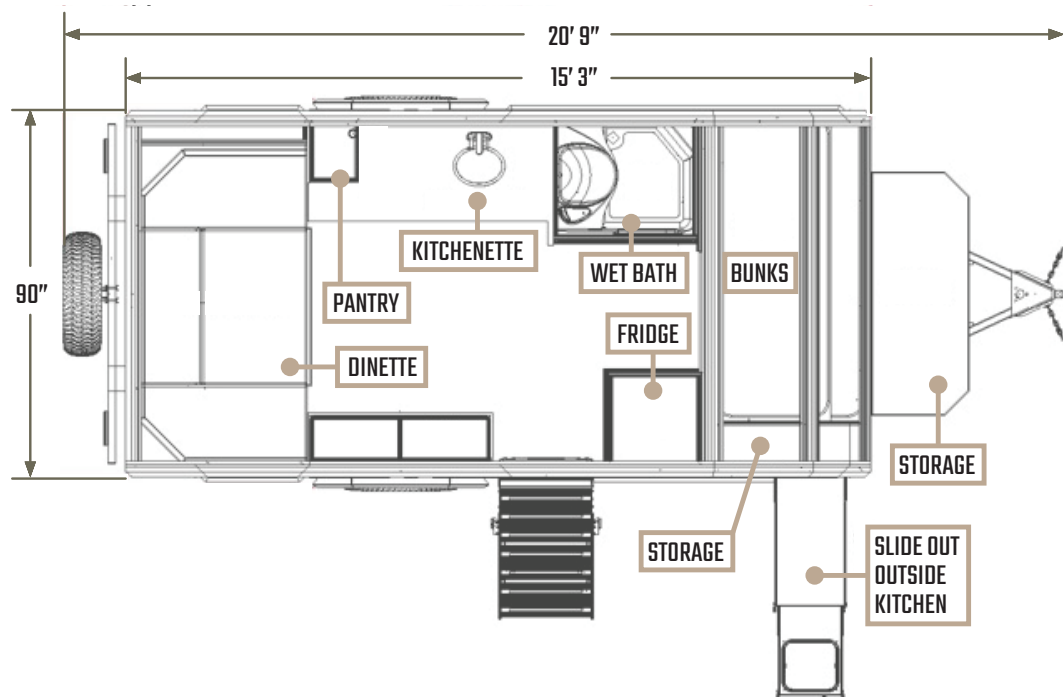
- Pull-out outside kitchen with Blackstone griddle and integrated sink and faucet
- Pull-out tray with integrated Dual Zone Indoor/Outdoor Fridge/Freezer
- Interior portable induction burner

## Construction

- Armor 3M™ full-body wrap film protection and graphics
- Armor EXO™ rubberized, water-repellent protection on exterior joints, trim, and skirting
- Armor EXO™ fully-body proprietary extrusion, full adhesive, and SIPs construction
- Zero wood construction
- SIPs composite panel construction for low thermal bridging
- High-density insulation
- Fully functional, powder-coated rock slider steps
- Roof-mounted aluminum rack, mounted to EXO™ extrusions-only
- Acrylic and aluminum entry door, lockable with built-in windows and interior screen
- Acrylic and aluminum windows with built-in screen and shades
- Rear bumper prep for recovery shackles or D-rings
- SGC-branded front-mounted Molle panel with Rotopax and Recovery Board mounting points
- Solid entry steps
- All aluminum cabinetry construction

## Comfort and Utilities

- REDARC RedVision Power Management System
- REDARC 200W Inverter
- LED lighting on interior and exterior
- Under bed storage compartments
- Deluxe comfort Teddy Bear bed mattresses & seat cushions
- Low profile NOMADIC 12V A/C
- Exterior power/charging receptacle
- Accessory solar prep
- 600W Solar Capacity
- Prep for large battery bank
- Nautilus WaterWorks valve panel
- 110V, 12V, and USB outlets
- EZ swap propane tank
- Outside propane quick-connect
- Propane and CO detector
- Full wet bath (shower and toilet)
- Truma Combi Heater and Water Heater
- 38 gal. Fresh water tank
- 52 gal. Black water tank
- Pet tether/bottle opener



# EXD

## Spec Sheet

Exterior Height	10' 1"
Exterior Width	90"
Exterior Length	20' 9"
Interior Height	78"
Refrigerator Capacity	45 L
Sleeping Bunk Weight Capacity	300 lbs.
Dimensional Size of Main Bed	36" x 86"
Dimensional Size of Bunk Beds	48" x 86"
Sleeping Capacity	3-4
Solar Capacity	600 W
External Propane Tank Size	20 lbs.
Fresh Water Capacity	38 gal.
Black Water Capacity	52 gal.
GVWR	5780 lbs.

## HIGHLIGHTS

- Zero wood construction
- SGC's proprietary EXD™ construction
- EXD™ = Proprietary extrusions, 3M™ film, and rubberized lower protectant
- Metal cabinets
- Assembled with bolts, like a truck (not with staples or screws like an RV)
- BAL High Clearance and Independent Suspension
- Truma Combi Heater & Water Heater
- EXD™ Rubberized lower Protectant & Seal
- REDARC RedVision Power Mgmt System
- Acrylic Windows and Doors