



Dear Skinny Guy Camper (SGC) Owner,

Here at SGC, we take pride in building a quality camper that can withstand even the roughest terrain year after year. The information found in this Owner's Manual can assist with operation, troubleshooting, and maintenance procedures of your camper.

If you are unable to find the information you are looking for, or you would like to share your experience about one of our campers, please reach out to us at www.skinnyguycampers.com

From the entire team at Skinny Guy Campers, we want to thank you and welcome you to the family!

Table of Contents

▪ General Information	Pg. 3
○ Owner's Manual Information	
○ Condensation	
○ Service Appointments	
▪ Limited Warranty.....	Pg. 4
▪ Seasoning the Tent Before First Use.....	Pg. 5
▪ Camper Design and Truck Capabilities.....	Pg. 6
▪ Customer Responsibility.....	Pg. 6
▪ Camper ID and Serial Numbers.....	Pg. 6
▪ Installation, Loading and Unloading the Camper.....	Pg. 7
▪ Opening of the Camper	Pg. 9
▪ Closing of the Camper	Pg. 15
▪ Tie Down System	Pg. 20
▪ Propane System	Pg. 20
▪ Fresh Water System	Pg. 21
▪ Winterization	Pg. 27
▪ Toilet and Wastewater System	Pg. 28
▪ Solar	Pg. 30
▪ Battery	Pg. 33
▪ Inverter	Pg. 34
▪ AC/DC Charging System	Pg. 34
▪ Appliances	Pg. 35
▪ Maintenance and Information	Pg. 38

General Information:

Owner's Manual

SGC strongly encourages every owner to read this manual thoroughly along with all manuals and instructions provided by Original Equipment Manufacturer (OEM) of the products, features and accessories utilized in our campers. This will assist you in understanding the camper, its features, and components.

This Owner's Manual will not cover all aspects and/or trim levels of each SGC. Not all features and/or components listed within this manual are available on every model. Features, components, products, and accessories utilized in the construction of an SGC are subject to change without notice. Photographs or illustrations in this manual are representative of function and in no way depict actual equipment, colors, fabric, etc. as it would be installed in or on your camper.

This Owner's Manual and the information contained herein are confidential and are the sole property of Skinny Guy Camper LLC.

Condensation

Where it comes from, what causes it, and various solutions. Condensation is not a defect and is a normal occurrence in tent camping.

Causes:

1. Condensation occurs when warm humid air comes into contact with a cold surface.
2. Cooking, showering, and even a person's breath can cause the humidity inside of the camper to rise. If the outside temperature is low enough, condensation will form on the camper's interior.
3. If enough of this condensation forms, it will begin to collect and pool in the lower spots of the camper. This can be confused with a tent leak but unlike a tent leak condensation is not a warranty issue.

Solutions:

1. When the conditions for condensation to form as described above are met, open windows approximately ½ inch allowing the camper to vent out the moisture.

Service Appointments

It should be expected that a varying degree of warranty/service repair will be needed at some point in the ownership of an SGC. The first point of contact for warranty repairs will be your Skinny Guy Camper dealer. Other dealers can be used; however, prior approval is required.

Skinny Guy Camper and your Skinny Guy Camper dealer have a strong and dedicated interest in maintaining the highest quality customer relations with its owners. Your satisfaction with your Skinny Guy Camper and your Skinny Guy Camper dealer is our primary concern. In addition to producing high quality products, we want to assure our customers that support with parts and service is available. **Our dealer network is the first line of communication to serve and supply your needs for your camper.** Our authorized dealers will assist in providing service maintenance needs, including part options and information concerning your camper. Should you experience a problem with service availability, please follow the steps in the order listed below:

1. Contact your selling dealer's service department for an appointment. Describe to the best of your knowledge the nature of the problem. Please keep appointments to establish a good, workable relationship.
2. Contact the owner or general manager of the dealership, should the initial attempt fail with the dealer service department: contact: Skinny Guy Camper Customer Service Department:

Skinny Guy Camper
1997 County Road 6
Bristol, IN 46507
Phone: (574)891-0200
Email: warranty@bontrageroutdoors.com

Please provide Skinny Guy Camper Customer Service with information regarding the issue you are experiencing with your camper along with the serial number of the camper in question. We will make every attempt to resolve your problem. Please bear in mind that most problems arise from a misunderstanding concerning warranty coverage and service. In most instances, you will be referred to the dealer level and your concerns will be resolved with the dealer's facilities and personnel.

To make a Service Appointment please contact your local dealer. You can find your nearest dealer at www.skinnyguycampers.com/find-a-dealer/

Limited Warranties

Your SGC comes with a 1-Year Stated Limited Warranty. Please visit www.skinnyguycampers.com to review FAQ's.

Disclaimer: *There are components, features and accessories that are excluded from the SGC Warranty or are warranted separately by their own individual manufacturer's limited warranty. Please review the manufacturer supplied manuals or information sheets, warranty cards and/or registrations.*

Seasoning the Tent Before Using Camper

Why do you need to season your canvas tent?

Seasoning (aka weathering) a canvas tent is an important process to ensure it's water tight. Since the tent panels are sewn together, and the holes are larger than the thread, there are hundreds of tiny holes that can let in water.

However, by soaking the tent in water, you enable the canvas and thread to expand and contract, filling in the holes and reducing leaking. Of course, after soaking, you need to let the tent fully dry to complete the seasoning process.

You should season your canvas tent after you buy it and once every 12 months to ensure longevity.

How to season your canvas tent

Seasoning a canvas tent isn't particularly hard but there are a few steps you need to follow to do it right.

Step 1. Find a suitable location

A sunny, dry morning is the best time to start seasoning your tent. Set up the tent and make it necessary to repeat the soaking and drying process again. Zip up the wall windows and close any doors or other openings. Make sure it's stretched out and as tight as possible.

Step 2. Use a long hose or sprinkler

Use a long hose to spray water on the tent to saturate it thoroughly or set up a sprinkler to emulate rainfall (you may need to move it around). Pay particular attention to wetting the seams. When it's completely waterlogged, walk away and leave it to dry in the sun.

Step 3. Let it dry

Once it's dry and hot to touch, repeat the process, adjusting the tent if needed to make sure that's it's stretched out as much as possible. On the second wetting the canvas will pull tight against itself, and the threads will swell filling in the holes. Leave it to dry again and repeat the process a final time.

Step 4. Pack it up

When your tent is 100% dry inside and out, it's fully waterproof and ready for camping. All you need to do is pack it all up and leave it in storage until your next campsite adventure.

Camper Design and Truck Capabilities

The Skinny Guy Camper's unique design puts our truck camper in a class of its own. The compact and low-profile design allows for users to have the benefits of a fully featured camper but in a small compact package. The SGC is unique in how it interfaces to the pickup truck.

The camper is mounted to the truck like a truck topper rather than a traditional truck camper. Our design allows for gear storage or installation of a drawer system (*like Decked or TruckVault*) below the camper in the remainder of the truck bed. The design of the SGC allows the camper weight to be supported by the truck's bed sides rather than the traditional method of utilizing the truck bed floor.

Note: *Due to the unavailability of specific vehicle box side weight ratings and/or model year changes, Skinny Guy Camper, LLC cannot be responsible for any adverse effect to the owner's truck bed that arises from the installation and use of an SGC.*

Customer Responsibility

It is recommended that you understand and follow your vehicle's manufacturer's weight ratings and loading requirements. Further, as with all truck bed camper installations, there is a potential to affect the vehicle's handling and driving characteristics.

The customer is responsible for maintaining and performing maintenance on the camper. See Maintenance and Information section on page 37.

Note: *It will be incumbent upon you to understand these effects, determine whether these effects pose potential adverse risk and to fully accept such risk.*

Camper ID with Serial Number

Every Skinny Guy Camper will come with a Federal Identification label attached to the exterior door. This ID label will have the serial number of your camper, manufactured date, dry weight, freshwater capacity, and propane capacity.

MANUFACTURED BY: Skinny Guy Campers

DATE: 8/2/2021

VEH I.D. NO. SGC6500210011

CAMPER WEIGHT IS 467.2 KG (1029.0 LBS) MAXIMUM WHEN IT CONTAINS STANDARD EQUIPMENT,
143.8 LITERS (38.0 GAL) OF WATER,
9.1 KG (20.0 LBS) OF BOTTLED GAS, AND
0.0 CUBIC METERS (0.0 CUBIC FT) REFRIGERATOR (OR ICE BOX
WITH 0.0 KG(0.0 LBS) OF ICE, AS APPLICABLE). CONSULT OWNER'S MANUAL
(OR DATA SHEET AS APPLICABLE) FOR WEIGHTS OF ADDITIONAL OR OPTIONAL EQUIPMENT.

FD-305

Installation, Loading and Unloading the Camper

Installation: Your truck will require brackets and/or drilling to accommodate the camper. *If your camper is equipped with the RedArc Battery Manager, your truck will require a common 7-way trailer plug with a factory charge line or a separate charge line installed inside of the truck bed.* Ideally the charge line would be installed against the sidewall of the truck's bed, so the charge line doesn't get damaged by laying loose in the bed.

There are three camper jack receiver locations integrated into the camper's main body structure. There are 2 locations on the driver's side and 1 on the passenger side. This design feature will allow for quick loading and unloading of the camper.



Always follow the below guidelines:

1. Have all necessary hardware and wiring completed at the dealership.
2. Always use level and stable ground when loading and unloading the camper.
3. Do not open and close the camper before it is installed in the truck bed.
4. Do not use the camper while on the jacks only.

Loading Camper to Truck

1. Raise the camper evenly in 4–6-inch increments.

Warning: Raising the camper in large increments can cause instability and undue stress on the camper jacks which can cause damage to the camper and/or vehicle.

2. Raise the camper high enough to have 4-6 inches of clearance between the top of the truck bed and the indexing hardware.
3. Slowly back the vehicle straight and centered underneath the camper.
4. Stop between 6-8 inches rt of being fully under the camper connect the winch cables to the front tie down locations using the winch cable tie down system.
5. Back up the vehicle fully under the camper and check for general alignment. If the camper is misaligned more than couple of inches on either side, carefully reposition the vehicle.
6. Plug in the 2-way charge-line connector.
7. Begin to lower the camper evenly in 4-6" increments. You can manually manipulate the camper's position as you lower it to align the indexing hardware.
8. Once all the indexing hardware has engaged in their respective locations, the camper can be lowered the rest of the way down.
9. Resecure all tie down hardware and systems. See Tie Down System Section for more information.
10. Remove and store the camper jacks and tri-pod feet.

Note: The removal of the camper should only take approximately 5-10 minutes.

However, loading the camper will take longer due to the time it takes to secure proper alignment and tightening of mounting hardware.

Unloading Camper from Truck

1. Locate the Skinny Guy Camper jacks and the 3 camper jack receiver locations.
2. Place the tri-pod jack and extensions onto the camper jack.
3. Slide the extension tube of the camper jack into the receiver slot on the side of the camper as far as they will go.
4. Loosen and disconnect tie down system.

Note: There is more than one tie down system.

5. Raise each jack evenly in 4-6 inches increments. Continue the increment raising until the camper is lifted off the truck bed sides and the indexing pins are clear of the bed bracket. It is recommended to allow 3-4" of space between the indexing hardware and the truck bedside.

Warning: Raising the camper in large increments can cause instability and undue stress on the camper jacks which can damage the camper and/or vehicle.

6. Unplug the charge line connector.
7. If using the cable winch tie down system pull the truck forward 6-8 inches and disconnect the camper from the truck at all four tie-down points.
8. *SLOWLY* pull forward in a straight line until the truck bed is clear of the camper.
9. Using the jacks, lower the camper to the jack's lowest position.

Storage

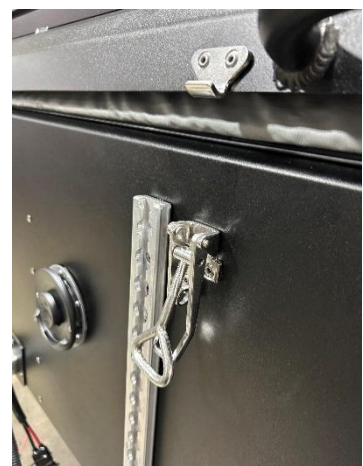
The camper can be safely stored on its jacks, but for more support, it can be lowered on a platform or sawhorses while still supported by the camper's jacks. If the camper is to be stored outside and exposed to high winds, it is recommended to utilize sawhorses or a platform.

The camper will have some level of movement while up on the jacks alone. This is not a cause for concern, in fact this movement will aid in aligning the indexing hardware during the installation process.

To Open the Camper

- 1: Park the vehicle in a secure location and verify there is adequate space above and behind to fully open the camper. Ensure there are no obstructions in the motion of the gas struts.
- 2: From the closed position, remove the locking pins from each cam latch and remove all cam style roof latch.

Note: The camper has gas struts to assist with opening, therefore the roof will begin to open itself slightly once the cam locks are released.



3: Remove the entry door by releasing the latches, pulling the door towards you and slide the door from the pins. Place the door panel in a secure location.

Note: Removing the door before raising the roof allows air to enter the camper allowing the roof to raise easier.

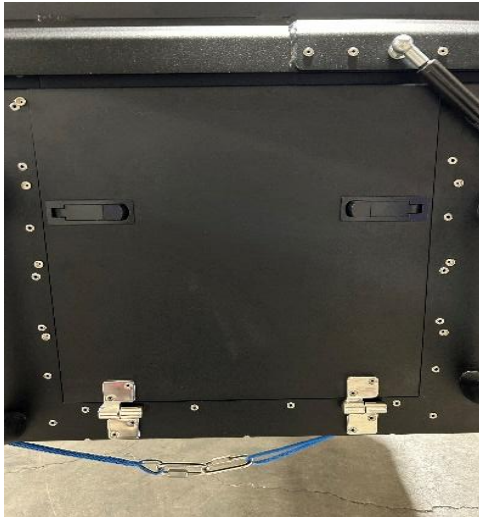


Fig. 1

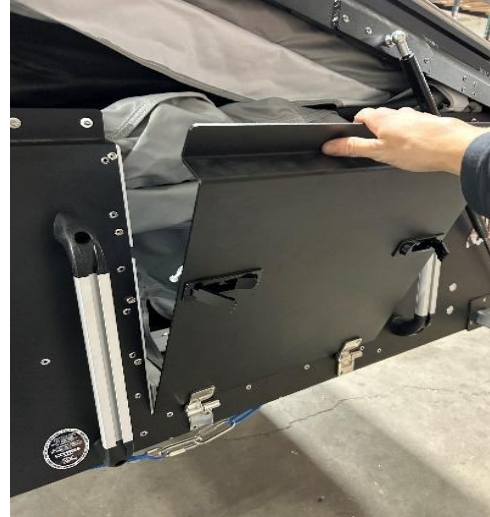


Fig. 2

4: Locate the jointed push rod assembly, unfold the assembly, and insert the retaining pin to secure the joint (Fig. 1-3). Insert the swivel end into the socket bracket on the roof lid's edge. Press in securely until a click is heard and the end is locked into the socket (Fig. 4).



Fig. 3



Fig. 4



Note: Ensure the opening of the pushrod's hinged joint is facing inside towards the camper while opening the roof. This will help prevent the hinge joint pin from bending.

CAUTION: The hinged joint on the push rod assembly is a pinch point, be sure to avoid the joint area with your hands while forcing the roof open or closed.

5: Using the push rod, push and guide the roof as it breaks over the rear of the camper (Fig. 1-3). Next, using the handle on the side of the roof, pull the roof assembly the rest of the way open. This may require some force as this action pulls the interior tent bow system partially into place.

Fig. 1



Fig. 2



Fig. 3



6: Remove the push rod assembly from socket by sliding the release button. Fold the rod and store the assembly in your designated storage location.

7: Locate the two bed/roof support rods. For each rod, there is a socket on the roof assembly and a corresponding socket on the rear of the camper body. Using one rod per side, secure the support rods by removing the small pin from the socket, inserting the ball end into the brackets then reinserting the retaining pin to lock it in position.

Note: You may have to lift and/or pull down the roof assembly to adjust to the correct height for the ball ends of the rods to slide in correctly.

Camper Body Sockets



Roof Sockets



8: Once inside, if equipped with a refrigerator cooler, lift the cooler from the floor to its designated location. This will allow you to reach the camlock assembly on the passenger side of the main bow. Perform the same process as in Step 9 for the camlock block on the passenger side of the camper. If needed, adjust the driver's side camlock to tighten the tent.

CAUTION: *DO NOT raise block past tent tension point. Doing so will cause unnatural stress on the tent seams and could cause a leak point for water or damage to the tent.*

Note: *To avoid overextending the block, both passenger and driver side blocks were designed to be locked in place once the bows are clear of each window.*

9: For ***Skinny Fat or Kit N' Kaboodle*** trim levels only.

Lift the kitchen unit and place in the designated place. Secure the kitchen with the locking bolt. Connect the utilities with the corresponding hoses. There is a connection for hot water (red), cold water (blue), kitchen wastewater (no color), one LP connection, and one electrical plug for the Truma temperature sensor. Once all connections have been made the kitchen unit will be ready for use.

Tip: *To make water connections easier, release the water pressure prior to closing the camper. You can do this by turning off the water pump and opening the faucet until water stops flowing.*

Attention: Remove the kitchen wastewater port cover on the exterior wall of the camper. Failure to do so will not allow the kitchen sink to drain and may cause overflow inside the camper.



10: If equipped, install dinette table and leg onto the table bracket.



11: Remove the cushions from stowage and place on dinette bench area.



12: Un-buckle mattress retention straps and move them out of the way.

13: Secure the driver side tent zipper door section using the tent's button snaps.

14: Apply final tension to the tent by adjusting the camlocks along the main bow.



To Close the Camper

Although closing the camper is the reverse of opening, complete the following steps to ensure a proper closure.

*****IMPORTANT: If tent is wet when closing the camper, you will need to open the camper when arriving at the next destination to allow the tent to dry before storing for extended periods of time.***

1: Secure the mattress using the retaining straps and stow bedding.

Note: extra bedding can increase the height of the bed, which can cause the lid not to close. It is recommended to stow the bedding prior to closure.



2: Stow away dinette seat cushions.

3: If equipped, remove and stow the table and leg assembly in its designated place.

4: Open faucet to release the water pressure and disconnect all kitchen connections. Release the safety mounting bolt and place kitchen in the designated area on the camper floor.

Note: The sink drain has the potential to drip out residual water during transport. You may wish to place the drain tube into a cup or place a towel underneath.

5: Release passenger side slide cam lock block and let the block slide all the way down the main bow to the lowest position. Lock the camlock at the lowest possible position on the main bow.

ATTENTION: You must have the camlock flush with the bottom and in the locked position. Failure to lock it will cause damage to the camlock assembly upon final closing of the camper

6: If your camper is equipped with a fold-out kitchen shelf, remove the fridge cooler and place it out of the way. Flip the shelf over into the stow position. The fold-out kitchen shelf folds in over the kitchen when setting on the floor.



7: Place the refrigerator on the floor of the camper in its designated location.

8: Stow a cushion between the cooler and the back of the cabinet wall. Other cushions can be placed wherever desired.

9: Unsnap all the button snaps securing the tent and push the tent into the body of the camper.



9: As you descend the ladder, release the driver's side camlock and allow the block to slide all the way down the main bow to the lowest position. Lock the camlock to secure it.

ATTENTION: You must have the camlock flush with the bottom and in the locked position. Failure to have it locked will cause damage to the camlock assembly upon final closing of the camper.

10: Disconnect entry ladder, place in its storage bag, and stow in designated location.



- 11: Locate the jointed push rod assembly. Unfold the rod and place the retaining pin to secure the rod in the extended position.
- 15: Remove the push rod from the quick release socket by sliding the release button. Stow the rod when the closing process is completed.
- 16: Replace the entry door and secure the door's latches.
- 17: Tuck in any protruding tent material into the camper body on all sides of the camper.
- 18: Starting on the driver side, using the roof handle pull the roof assembly down, then slip the latch loops over the J-hooks. **DO NOT CLOSE or TOGGLE THE LATCH YET.**
- 19: Move to passenger side, using the roof handle pull the roof down enough to slip the latch(es) loop over the J hook. Then close the passenger side roof latch. Return to driver's side and repeat.



20: Install locking pin on each roof latch.



Note: When the camper is closed for travel position, roof must be fully closed and secured with locking pins.

TIPS:

1. If you are not stowing the cushions within a cabinet when closing the camper, place the seating cushions in a way to avoid interference with the tent material. The cushions and folded tent material together can create too much height to properly close the lid. If space allows, the cushions can be used to set between internal cabinets and refrigerator to protect them from getting scratched.

2. Due to the compact and low profile of the camper, any bunching of the tent material can increase the force needed to clamp the lid. Therefore, the more organized the tent is when the camper is being closed, the less pressure needed to close the roof.
3. In high winds, it may become necessary to orient the truck with the wind to assist in opening and/or closing the camper. For example, if you wish to close the camper, orient your truck with the wind **directly** behind your truck. The wind will assist in closing the camper lid.

Tie Down Systems

Depending on the year, make and model of your vehicle, the Skinny Guy Camper will have different brackets and tie down systems. It is highly recommended you read, understand and follow directions in accordance with your system.

General Notes and Guidance:

- **Cable and winch system:** Some Skinny Guy Campers may have a cable and winch tie down system. This system is designed to interface with the existing truck's bed box D rings. This system requires a supplemental turn buckle in the back and a fixed cable safety chain in the front tie down locations.
- **Four Point Hardware System:** Some Skinny Guy Campers will be mounted and indexed to the vehicle using supplied brackets. This system will require removing mounting hardware from inside the camper before loading and unloading it.

Propane Gas System

*This section only applies to trim levels that feature a propane system. If included on your trim level, your Skinny Guy Camper will be shipped with an empty propane tank. The tank must be purged prior to use to remove air and moisture. This can be done by your dealer or taken to an authorized propane vendor.

To utilize your Propane Gas system:

1. Install the tank in the designated location.
2. Before opening the propane tank make sure all appliances are turned **OFF**.
3. Properly connect the propane quick connects on the kitchen console and

lock the latch.

4. Once you have confirmed all propane appliances are turned off, slowly open the valve for the propane bottle.
5. Prior to closing the camper, disconnect the propane quick connects on the kitchen console.
6. When finished camping, turn off the propane system by closing the valve on the propane tank.

Tips and Information:

- If your propane system has been off for an extended period or the propane bottle has been removed for filling, the system will likely have air that will need to be bled off for the appliances to function properly. To do this open the cook top burner valve and attempt to light until the burner lights. This should effectively remove most of the air from the propane lines.

Note: *This should be done before attempting to run any of the other propane appliances.*

- New propane appliances may emit an odor for the first several moments of operation.
- Ensure the propane detector is functional and test regularly.
- There are two (2) quick connects on the camper, one (1) at the kitchen unit and one (1) at the tailgate area for auxiliary use.

The Skinny Guy Camper utilizes *PROPANE GAS ONLY*. DO NOT connect natural gas to this system! **If you smell propane gas anywhere in or around the camper, *carefully exit the camper* and close the LP tank valve. **

Fresh Water System

**This section only applies to trim levels that feature a Freshwater System.*

The Skinny Guy Camper has a basic fresh water supply system that consists of 1 or 2 potable storage tanks, a 12v pressure demand water pump, a water heating system, a hot and cold sink basin valve and hot and cold shower point valve.

To Fill the Fresh Water Tank(s):

1. Locate the gravity fill port on the passenger side of the camper, remove the water port cap.
2. Using a hose with an RV style adaptor, connect the hose to the water fill.

Note: the port fills on a Skinny Guy Camper will not fit a standard garden hose. Use the RV style adapter provided.



3. Slowly turn on the water source and leave at a low pressure. High water flow will not allow the tanks to fill properly and/or can cause damage.
4. Once the vent at the fill port begins to burp, shut off the water source.
5. Allow for the 2 freshwater tanks to settle and equalize, approximately 15 minutes.
6. Continue filling very slowly until the water burps from the fill port. This process should allow for the tanks to fill more completely.
7. Remove hose from camper and replace the water port cap.

Note: When the tanks are completely full, water will likely splash out through the tanks air vents as you drive. This is normal.

Operating the Fresh Water System:

The Skinny Guy Camper utilizes an RV-style 12v pressure demand pump.

1. Fill the freshwater tanks using the steps listed in “To Fill the freshwater tank section” before turning on the water pump.
2. Connect the kitchen console sink hoses according to the marked notations.



Note: If the CPC quick release water

connections are made while the system is under full pressure, water may leak at the fitting. To fix, release pressure and re-connect. It is recommended to make connections before turning on the water pump.

Note: The CPC connections have rubber O-rings in them. Keeping these lubricated is good practice. We recommend using food grade lubricant for this. This product can be purchased online.

3. Push in the water pump button located on the control panel to turn on the water pump.



4. You will hear the water pump begin to run as it draws water from the tanks.

Note: *This process may take a few moments to reach full prime. It is also helpful to have the HOT water valve open at the sink during this process. This will allow air to purge as the pump fills the freshwater system and the hot water heater (if equipped).*

5. After the majority of air has been purged from the freshwater system, you will have a smooth water flow.

6. Turning off the sink will allow the system to build pressure up and allow the pump to shut off. If there is air left in the system, it should work its way out with normal use, air in the line can cause the pump to cycle.

Note: *If the pump repetitively cycles when the water is not flowing and all air has been purged, this may indicate a leak or a pump issue. Contact your Skinny Guy Camper dealer.*

7. You may now turn on the water heater if equipped.

Note: *It is recommended to shut off the water pump while the camper is not in use.*

Draining the Fresh Water System

It is recommended the primary freshwater system can be drained between uses.

- To drain the freshwater tanks, open the valve(s) in the utility panel at the camper's tail gate area.



- To drain the hot water tank and above floor system locate the yellow handle valve in the rear storage compartment next to the toilet area. Open the valve to drain the water.



Note: It will help to park the vehicle with the front end slightly elevated to assist in the draining.

***** This process alone will not WINTERIZE the camper. *****

Tank Heaters

The freshwater tank(s) and the black wastewater tank have 12v tank heaters designed to heat the tank(s). These tank heaters draw approximately 15 amps 12v DC and the charge line from the truck will provide enough amperage while driving.

However, it is important to **shut off the heaters while the camper is in use and/or without an external power supply.** The tank heaters will drain a typical 12v battery in **7-10 hours.** The furnace will supply heat to the holding tank area when camper is open and in use.



To draw/suck water from an outside source into the camper and store the water:

1. Connect a hose to the port labeled “intake”. Make sure there is a tight seal as the pump will not prime if any air is introduced at this connection.
2. Place the other end of the hose in the water so it is completely submerged under water.
 - It is recommended that a sediment filter be used to prevent larger sediment from being pulled into the hose.
3. There are two valves that must now be turned. The first valve marked “Winterize” and is located on the utility panel close to the intake port. The second is marked “Tank fill” this valve will vary by model.
4. Once both valves have been rotated from the “normal position” the water pump can now be turned on.
 - There is a limit to how far and how much height the pump can lift water into the system. The closer you are to the water source, the easier the pump will prime.
 - If you are having trouble achieving prime, a simple priming bulb can be added to the intake hose to assist in pulling water into the pump.
 - The pump will not prime unless the Tank Fill valve is open.
5. Remove the freshwater filler cap on the exterior of the camper to allow full venting.
6. Once the pump is primed, water will begin to flow through the UV Sterilizer and back into the freshwater tank. **DO NOT leave the camper unattended during this process.**
7. Once water begins to burp out of the fill port, turn the tank fill valve to the “normal” position. The pump will pressure up and turn itself off.
8. Wait several minutes then crack the tank fill valve to allow water to slowly flow into the tank. Once water flows from the fill port again the tank(s) should be full.
9. Place both valves in “normal” position and remove the Guzzle H2O Stream and stow.

Skinny Guy Campers, LLC makes no representations or warranties regarding the effectiveness of the Guzzle H2O System.

Winterization For Campers with Onboard Water Option

If the camper is not being used for a while, in storage or exposed to below freezing temperatures, you must winterize it.

Warning: If winterization is not completed, you risk water freezing in your camper and damaging appliances, water valves, and plumbing. Damage due to freezing water is not a warrantable issue.

Winterization Steps:

1. Park the vehicle with the front end slightly elevated to assist with gravity draining.
2. Open all freshwater tank drain valves in the utility panel at the tail gate area. Allow the tank(s) to be completely empty before moving on to step 3.
3. Open the kitchen faucet and turn on the kitchen faucet between hot and cold so that both hot/cold lines are drained of all water pressure.
4. Locate the yellow handle drain valve. Open the valve by moving the handle to be in-line with the hose line.



5. Once the entire freshwater system stops draining, turn on the freshwater pump for about 60 seconds or till **there is only air spitting out of drain valve**. This step will evacuate water from the head of the pump and the pressure regulator.

Note: ensure there is no water left in the tanks prior to this step or the pump will introduce new water to the system.

6. Leave all the valves in the open position. **You may still see some water drip and drain out as the camper is moved around.*

Antifreeze Valve System (if equipped)

1. Allow the water in the hot water heater to completely drain, 5-7 minutes (2-3 gallons of water). Once the above floor system is completely drained close the yellow valve.



2. Locate the hot water heater bypass valve located near the Truma Combi unit. Turn the bypass valve to the “Winterize/Bypass” position.
3. Locate the port labeled “Intake” at the utility station by the tailgate area. Connect a intake hose to port and place the other end of the hose into a gallon jug of RV antifreeze.
4. At the utility station, turn the valve marked “Winterize”.
5. Turn on the water pump.
6. Open the hot and cold valve at the sink, Bullfinch shower port, and toilet valve until pure RV Antifreeze flows.
7. If the camper is equipped with a toilet system, run the toilet.
8. Re-drain the black tank. This will allow the extra antifreeze to pass through to the macerator waste pump.

If the camper is equipped with the external UV Water Sterilizing System and you plan to leave it in your camper: remove the filter element from the UV filter unit and replace the filter housing.

Failure to follow this step will ruin the filter element and it will need to be replaced.

Toilet and Wastewater System:

**This section only applies to trim levels that feature a Freshwater System.*

The toilet system is a fully integrated flushing toilet system. It has a standard RV style hand flush valve toilet with a black waste tank in the basement that will capture and store waste.

Keep in mind to:

- Always use RV style toilet paper.
- Use RV waste tank deodorizers (can be purchased online).
- Keep a small amount of water in the bowl. This will keep the seal lubricated and prevent odor from escaping the black tank through the toilet valve.

Emptying the Black Water Tank:

The Black water tank is emptied using a macerator/grinder pump system. You must empty the tank at a waste dump station or designated waste receptacle.

1. Locate the wastewater drain on the utility panel found in the tail gate area of the camper.
2. Remove the brass cover cap for the macerator drain.
3. Connect a waste hose.
 - A standard garden hose will work.
 - The system can pump up to 60 feet.

Tip: The larger the inside diameter of the hose, the better the system will run.

4. Place the other end of the hose in a waste dump or designated waste receptacle.
5. Locate the gate valve and the Macerator switch on the rear utility panel.



6. Open the valve and turn on the macerator.
 - The pump will run with a consistent pitch until the tank is empty. Once the tank is empty, the pump will become louder and will sound like it is cavitating.

7. Shut the valve and turn off the pump.
 - Run 2-3 gallons of fresh water through the toilet and repeat steps 5 & 6. This will assist in flushing the system of any remaining solids. This will also allow for the black drain hose to get cleaned out.
8. Disconnect the hose and replace the brass cap.

Note: *If you have access to a hose bib connection at the dump station, you can run fresh water through the dump hose to flush out. Upon completion of evacuating the black tank, connect the two ends of the dump hose to seal and stow hose in its designated storage location.*

DO NOT use your waste hose for any other purpose. It is highly recommended to designate and mark your waste hose and store away from freshwater hoses.

Power Sources

Solar System

*This section only applies to trim levels that feature a Solar Panel System.

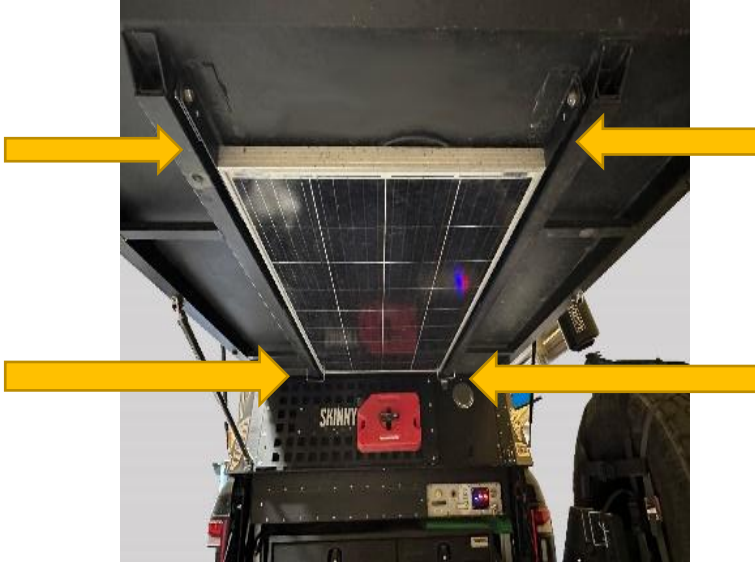
Depending on the trim level and model of the Skinny Guy Camper, the camper will have a 100–190-watt solar panel with the solar charge being controlled by the RedArc Battery Manager30 or a stand-alone charge controller.

The 190-watt solar panel should produce approximately 6-8 amps in a full midday sun. A 100-watt panel should produce about 3-5 amps in full midday sun. If the camper is exposed to sun on a regular basis, the panel should provide enough charge to maintain the fridge cooler's amp draw and still maintain a charge.

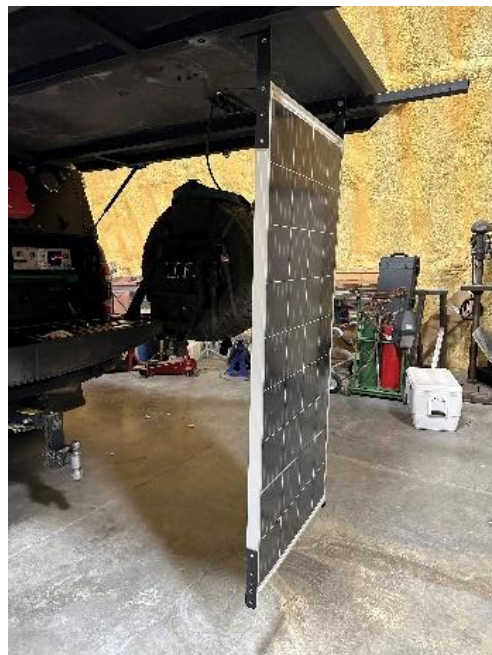
The solar panel is integrated into the roof assembly so you can take advantage of charging in transit and while at camp. The panel will need to be deployed while the camper is open for use to benefit from the sun.

Steps to deploy the solar panel while camping:

1. Remove the 2 retainer pins closest to the camper body first that secure the solar panel to the rack. Then remove the 2 retainer pins at the furthest end of the solar panel.



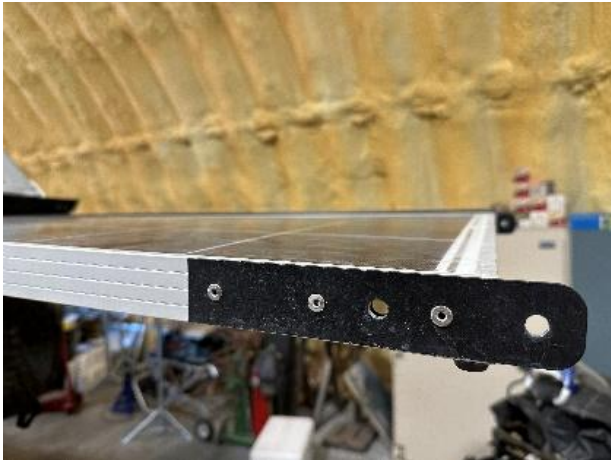
2. The panel will now swing down away from the truck.



3. Begin to slide out the support arms located inside the main roof assembly support tubes. Do NOT pull the support tubes all the way out.



4. Rotate the panel a full 180 degrees until the panel is facing up towards the sun.
5. Adjust the support arms to align with the solar panel. Using the retaining pins, secure the support arms and the solar frame. This will lock the panel facing up.



Note: The panel is always connected to the system therefore one only needs to orient the panel towards the sun to achieve charge.

To stow the solar panel: reverse steps list above.

Note: There are many factors that can cause your solar panel to produce more or less power.

Please take the following into consideration:

- *The angle of your panel towards the sun.*
- *If there are any trees or items that can displace UV rays.*
- *The latitude of your physical location.*
- *The cleanliness of your solar panel.*

Refer to the appliances Owner's Manuals for safety, operations and service procedures.

Battery

All Skinny Guy Campers are designed to be used with a Lithium Battery or a Battery that does not require venting. DO NOT use a standard lead acid battery or any battery that requires venting as they are life-threatening.

AGM Battery (absorbed glass mat): is a sealed battery and requires limited maintenance. It should be noted that this type of battery does mimic a standard lead acid battery and requires to be fully charged throughout any storage period or stored in a climate-controlled environment during freezing temperatures.

Lithium Battery: Lithium differs and outperforms a traditional AGM battery in many ways.

1. A lithium battery offers more usable power as the battery will discharge and maintain nearly full voltage until it has reached a predetermined state of discharge.
2. Most lithium batteries feature an integrated internal battery management system that will shut off the batteries output when the battery has reached a predetermined state of discharge.
3. It should be noted that the internal BMS (Battery Management System) will also prevent the battery being charged while the battery temperature is below freezing.
4. Lithium batteries can take charge faster than AGM. The warmer the battery is the faster it can take charge.
5. Lithium batteries weigh 40% less than traditional AGM.
6. Lithium batteries have longer life spans. Some are capable of 3000 or more cycles vs a typical 400 cycles for AGM battery.

7. Lithium batteries have more capacity than other batteries of the same physical size.

Power Distribution and Circuit Protection

Depending on the trim level of your Skinny Guy Camper, there is a designated compartment inside the camper that will house a fuse/distribution center. This is where the 12V system fuses are located. If an electrical feature is not working always check the fuses first. The camper may be equipped with up to three different types of power distribution systems.

Please refer to the specific system's product information for detailed information.

Power Inverter: Depending on the trim level of the Skinny Guy Camper, the camper may have a 1000W power inverter. The inverter is used to convert 12V DC into 110V AC and supply usable household voltage to a single internal outlet. A few things to keep in mind regarding the inverter.

1. The output from the inverter is 1000W.
***Be aware of the appliances or devices that will exceed the output rating. For example: coffee machines like a Keurig.*
2. Turn off the inverter when not in use. The inverter will draw 2-4 amps per hour even if there is nothing plugged into the outlet.
3. The outlet in the camper is connected to the inverter *ONLY*. The plug will not provide 110v power by plugging the camper into shore power.

AC to DC Charging Systems: Depending on the trim level of the camper, there can be 3 different options or combination of options to charge the 12v system.

1. External Vehicle 12V charge line :

This charge system is designed to work with the vehicle's trailer 7-way plug. As the vehicle is running, the vehicle's alternator will supply power and charge the camper battery.

Note: *it is recommended to have a 7-way plug installed inside the truck bed by the dealership.*

Warning: If the vehicle does not have a battery isolator in the charge line system, it is recommended that an isolator be installed to prevent the camper from drawing down the vehicle's battery.

2. Basic charge system (Shore Power):

This is a simple 15-20amp AC to DC charge system. On the exterior wall of the passenger side of the camper is a weather-proof plug. Using a 15-amp extension cord, plug the camper into a 110v outlet. The charger will recognize the state of the charge and manage the output until the battery is fully charged.

3. The RedArc Battery Manager30 system:

The RedArc is a comprehensive power management system designed to manage all power inputs. On an SGC Camper this includes:

- 110v AC to DC charge
- Solar panel charge
- External vehicle 12v charge line
- Shore power plug
 - The camper can be plugged into 110v throughout storage, however, the RedArc will not allow charging below if the temperature is below freezing.
- Lithium battery
 - **NOTE:** The RedArc will not charge a lithium battery if the battery has been fully discharged and the battery BMS has shut the battery down.

Tip: If the RedArc will not recognize the battery, double check the battery. If the battery is fully discharged, a 12v DC will have to be applied directly to the battery before the RedArc will begin to function.

Appliances

Refer to the appliances Owner's Manuals for safety, operations and service procedures.

Depending on the trim level of your camper there may be appliances such

as a fridge cooler, propane gas cooktop, or Truma Combi furnace/water heater.

Furnace/Water Heater

*This section only applies to trim levels that feature a Truma Combi System.

Skinny Guy Campers features a Truma Combi furnace/water heater. This high quality and efficient appliance is OEM rated at 14,300 BTU forced air output and has approximately 2.5 gallons of hot water storage.

IT IS HIGHLY RECOMMENDED YOU READ AND UNDERSTAND THE TRUMA OWNERS MANUAL.

Steps for operating the Truma Furnace:

1. Ensure the propane system is turned on, pressurized and purged of air.
2. Plug in the 2-way electrical connector. The Truma Control Panel will display a **212 error** until this connection is made.
3. Select the Heater Icon (looks like a small RV with thermometer) on the Truma Control Panel.
4. Rotate the knob to the desired temperature, press the knob gently to set. The furnace will automatically begin to function.

Note: *The furnace will not run while the camper is in the closed position.*

Steps for operating the Truma Water Heater to operate:

1. Fill water heater with water
2. Turn the knob to the water heater icon.
3. Choose your setting.
4. Gently press the knob in to select.

There are three (3) settings on the controller for hot water.

1. *ECO mode:* is recommended for when high volumes of hot water are not needed to conserve LP.
2. *Temperature*
3. *Boost*

Tips and Notes about a Truma Furnace/Water Heater

- Keep all obstructions away from the furnace output vents. If one or more heat

vents are restricted, the furnace will not function properly and will send an error code and shut off.

- The furnace and water heater can run simultaneously, however if the hot water is set to “Boost” the furnace will not run.
- See Truma Owner’s Manual for further instructions and error codes.

Refrigerator Cooler:

1. The refrigerator cooler can be plugged in and operating while the camper is closed. However, a high ambient temperature may prevent the refrigerator cooler from operating at its optimal efficiency.
2. If you are not utilizing the refrigerator cooler, turn off the refrigerator to prevent draw on the power system.
3. If you are actively trying to cool down the refrigerator, you can plug it into a 110-outlet to conserve the 12v power within the camper.
4. Pre-cool the refrigerator prior to placing food in the cooler.

Kitchen stove:

1. Always secure the stove/sink with the secure star knob to the countertop.



2. The stove top may not ignite if water has been splashed around the stove burner.

Fire Extinguisher:

A dry chemical fire extinguisher has been installed by the entrance door. It is suitable for extinguishing small fires of the Class B or C type only.



O2/Propane Detector

Be sure to read, understand and follow the information provided by the CO2/Propane Detector manufacturer.

- ✓ It is recommended that you test your CO2 and Propane detector regularly.
- ✓ Do not place items in front of the detector.

Smoke Alarm

The smoke alarm will only work properly if it is operational and maintained. Smoke alarms have a limited life and will eventually need to be replaced. Immediately replace the smoke alarm if it is not working properly, if it displays any type of problem, or within five (5) years of use. Be sure to read, understand and follow the information provided by the smoke alarm manufacturer.

- ✓ It is recommended that you test your Smoke Alarm regularly.
- ✓ If the internal 9V battery becomes low, the alarm will chirp every 60 seconds. Replace the battery immediately.

Maintenance

Tent Material:

- **Do Not** power wash the tent material.
- Inspect the following sealed areas and reseal as needed
 - Top of bed rail (bed must be open to see this area) Fig. 1
 - Corners of bed rail Fig. 2
 - Edges of metal at connection points. Fig. 3
 - Along hinge under the bed (bed must be open to see this area, will need to flip over the small platform that covers hinge)

Fig. 1

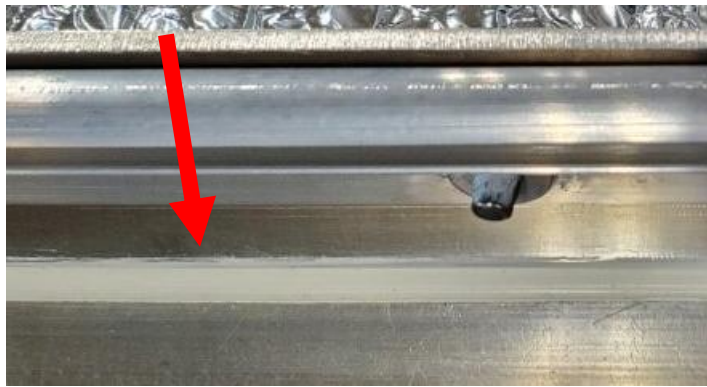


Fig. 2



Fig. 3



Fig. 4

